

PLANNING FOR PEOPLE & PET EXERCISE IN OLD TOWN POCATELLO



Presentation by Bannock Bark Parks and Old Town Pocatello
to the City of Pocatello Parks & Rec Advisory Board
August 5, 2010

OLD TOWN PEOPLE & PET WALK

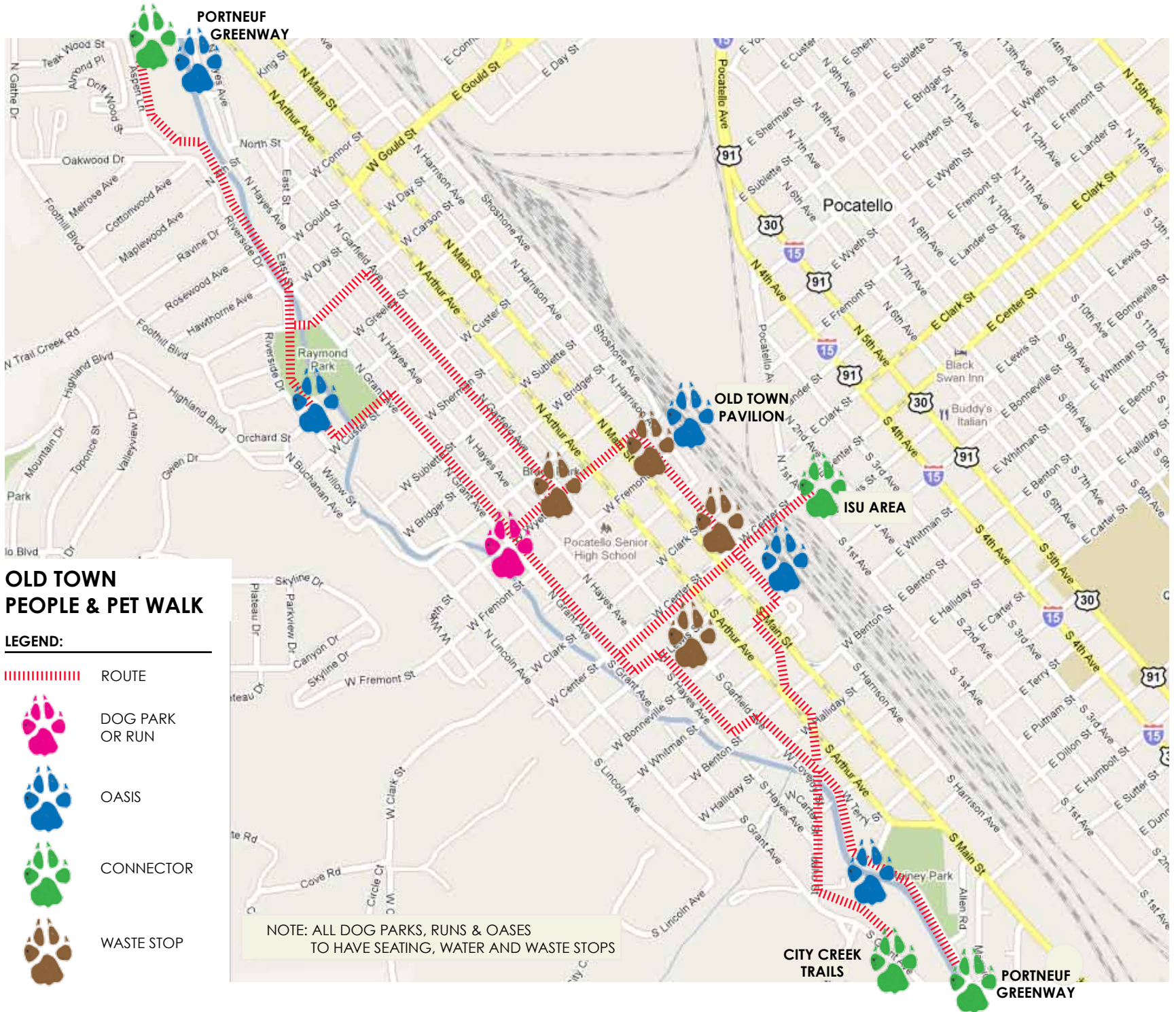
GOAL:

ENCOURAGE A SOCIAL, ACTIVE LIFESTYLE FOR CITIZENS AND THEIR PETS THROUGH MAPPED WALKING ROUTES WITH DOG-FRIENDLY DESTINATIONS IN OLD TOWN

BENEFITS:

- IMPROVE HUMAN HEALTH & STRENGTHEN NEIGHBORHOOD SOCIAL NETWORKS
- ENCOURAGE BETTER PET CARE HABITS BY OWNERS AND, AS A RESULT, IMPROVE DOG BEHAVIOR
- PROMOTE CLEANLINESS IN PARKS AND OTHER PUBLIC LANDSCAPES THROUGH THE AVAILABILITY OF PET WASTE STATIONS
- PROMOTE COMMUNITY SAFETY THROUGH THE ACTIVE, REGULAR PRESENCE OF CITIZENS WITH PETS AS 'EYES ON THE STREET'
- IMPROVE THE LOCAL AND REGIONAL NETWORK OF DOG-FRIENDLY RECREATION OPPORTUNITIES AVAILABLE TO ALL CITIZENS
- DEVELOP A PARTNERSHIP MODEL FOR IMPLEMENTATION OF DOG-FRIENDLY RECREATION OPPORTUNITIES BETWEEN OLD TOWN POCATELLO, BANNOCK BARK PARKS AND THE CITY OF POCATELLO





PORTNEUF GREENWAY

OLD TOWN PAVILION






ISU AREA

CITY CREEK TRAILS

PORTNEUF GREENWAY

OLD TOWN PEOPLE & PET WALK

LEGEND:

-  ROUTE
-  DOG PARK OR RUN
-  OASIS
-  CONNECTOR
-  WASTE STOP

NOTE: ALL DOG PARKS, RUNS & OASES TO HAVE SEATING, WATER AND WASTE STOPS

POTENTIAL OLD TOWN PEOPLE & PET WALK NODE TYPES:

DOG PARK

ONE ACRE OR LARGER
FENCED PARK AREA
OFF-LEASH
BAG DISPENSER/TRASH
WATER
SHADE
SEATING
SIGNAGE
KIOSK
DOG WALK MAP

DOG RUN

LESS THAN ONE ACRE
FENCED PARK AREA
OFF-LEASH
BAG DISPENSER/TRASH
WATER
SHADE
SEATING
SIGNAGE
KIOSK optional
DOG WALK MAP



Dog park in Nampa, ID



Dog run in Pioneer Park, SLC, UT



Dog run in Washington Square, NYC

POTENTIAL OLD TOWN PEOPLE & PET WALK NODE TYPES, cont'd:

DOG WALK OASIS

UNFENCED
PARK OR STREET-SIDE
ON-LEASH
BAG DISPENSER/TRASH
WATER
SHADE
SEATING
DOG WALK MAP

PET WASTE STOPS

BAG DISPENSER
TRASH SERVICE
SIGN

CONNECTOR

INTERSECTION WITH EXISTING TRAIL/PATH
DOG WALK MAP



Dog park in Nampa, ID



Pet waste stop, Old Town



Examples of pet water fountains

ACTION ITEMS:

1) CREATE A MASTER PLAN FOR THE OLD TOWN PEOPLE & PET WALK

- EVALUATE POTENTIAL NODES AND DEFINE NODE TYPES
 - DOG PARKS
 - DOG RUNS
 - DOG WALK OASES
 - PET WASTE STOPS
 - CONNECTORS
- DETERMINE ROUTES, ROUTE LENGTHS AND CONNECTIONS
 - USE EXISTING PEDESTRIAN & BIKE ROUTES
 - CONNECT WITH CITY PARKS, GREENWAY, CITY CREEK TRAILS
 - GET COLLABORATIVE FEEDBACK FROM RELEVANT ENTITIES
- ESTABLISH DESIGN & INSTALLATION BUDGET AND PHASING/TIMELINE FOR ANY NEEDED IMPROVEMENTS
- DEVELOP USE GUIDELINES
 - COORDINATE WITH OTHER ENTITIES FOR CONGRUENCY (CITY, GREENWAY, OLD TOWN, ETC)



2) PUBLICIZE AND PROMOTE USE OF OLD TOWN PEOPLE & PET WALK

- DEVELOP RECOGNIZABLE SIGNAGE AND COMPANION MAPS WITH PRINTED AND WEB-BASED INFORMATION
- UTILIZE THE OLD TOWN P&P WALK AS LOCATION OF COMMUNITY EVENTS, INCLUDING PROMOTIONS FOR HEALTHY LIVING, PET EDUCATION, NEIGHBORHOOD AND SEASONAL ACTIVITIES

3) PLAN FOR LONG-TERM MAINTENANCE OF OLD TOWN PEOPLE & PET WALK FACILITIES

- IDENTIFY MAINTENANCE TASKS AND RESPONSIBLE ENTITIES
- DOVETAIL WITH EXISTING PUBLIC FACILITIES AND MAINTENANCE SCHEDULES
- INTEGRATE DURABLE, LOW-MAINTENANCE AND VANDAL-PROOF MATERIALS INTO ANY IMPROVEMENTS

THANK YOU FOR YOUR INTEREST!



Old Town Pocatello, Inc. envisions a downtown that is a destination for locals and tourists alike; a destination that is celebrated for its history and uniqueness, providing an appealing retail mix, desirable commercial space, quality housing, unique common areas and major community events. We want to sustain and grow Old Town Pocatello as a vital cultural, economic and commercial destination and community-wide gathering place through fostering and nurturing stakeholder partnerships.

Contact: Stephanie Palagi, Executive Director
Phone/Fax: (208) 232-7545
E-Mail: spalagi@oldtownpocatello.com
Web: www.oldtownpocatello.com



Bannock Bark Parks, a volunteer-run 501c3 non-profit organization, is committed to enriching community life and fostering long-term, positive relationships among people & dogs in southeastern Idaho by working with municipalities and other agencies to fund, establish and maintain dog parks in the region. Bannock Bark Parks promotes responsible, educated dog ownership through the establishment of fenced, off-leash dog parks that encourage owners and dogs to exercise and socialize together in a safe, appropriate setting.

Contacts:
Stephanie Bolster, Chair, Board of Directors
Phone: (208) 251-9278
Alissa Salmore, Board of Directors
Phone: (208) 406-3294
E-mail: bannockbarkparks@yahoo.com
Web: www.bannockbarkparks.org